



Komodo Health analysis finds Medisafe's digital drug companions improve medication adherence and extends persistence.

Komodo Analysis:

Komodo Health, a healthcare data and analytics firm, conducted an analysis using its Healthcare Map™ of 325 million U.S. patient journeys to examine the impact of Medisafe's digital drug companion on patient adherence and time on. Using claims data and a 1:3 matching formula, Komodo compared patients enrolled in a biologic digital companion program against a matched control group to measure these results.

Methodology:

Medisafe worked with Komodo to identify test and control groups with the test group enrolled in a Medisafe biologic digital companion program and the control group carrying on without the Medisafe program. Medisafe users were required to have at least one relevant dermatology diagnosis, be active at least 90 days on the program, and be active on a biologic Rx while on the program. Additional matching criteria – including age, gender, and drug initiation date – helped to ensure identical cohorts between test and control groups to produce accurate results.

Komodo's Healthcare Map integrates disparate sources of patient, healthcare providers, and payer data to provide the industry's most precise view of the U.S. healthcare system. The Healthcare Map draws data from both providers and payers and is the only database of its kind to provide a longitudinal view of the entire patient journey for 325 million U.S. patients. This includes 'payer complete' (closed data) for 170 million patients, where Komodo captures 100% of these patients' health encounters. This data is coming directly from a network of 165+ US health insurance providers, so the Healthcare Map offers visibility into 3-6 times more patient encounters compared to legacy data aggregators.

Findings:

The results of the study found Medisafe users in the test cohort had stronger adherence (measured by medication possession ratio, or MPR) on average compared to the control cohort of non-users. Results also found patients were more persistent on their medication when combined with Medisafe's platform.

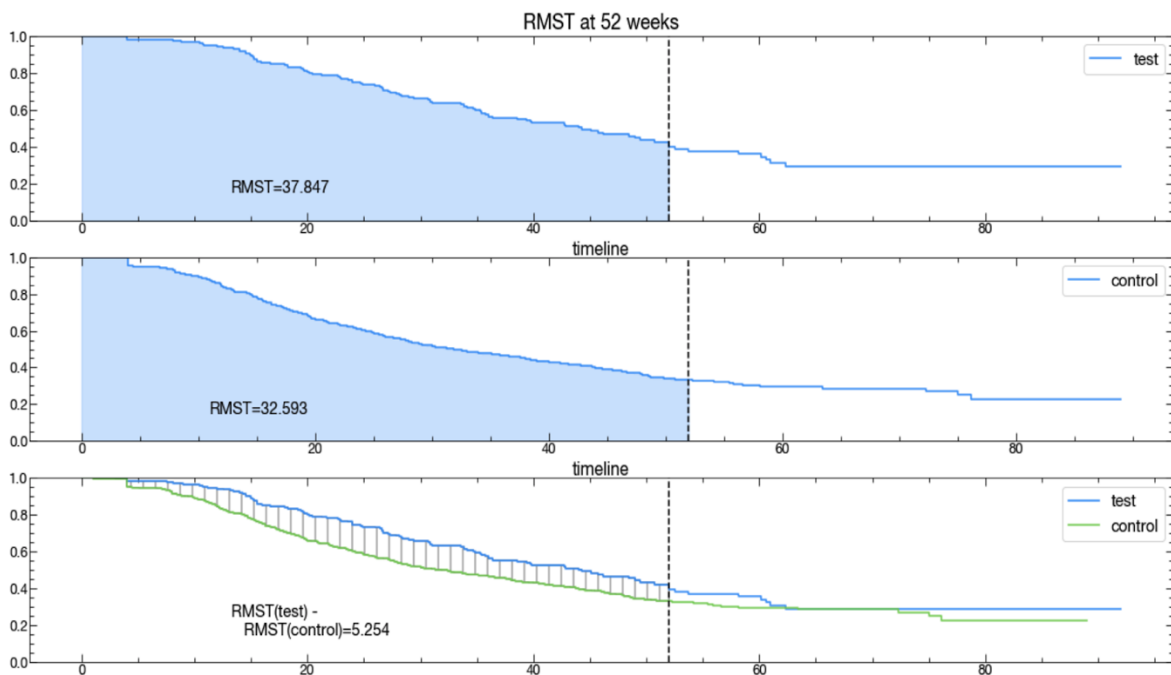
- **Adherence:** The study found that Medisafe program users demonstrated a 5.8% increase in adherence compared to patients who were did not use Medisafe. Results also showed that existing patients who joined the Medisafe program saw a 7% increase

in adherence pre- vs. post-Medisafe start compared to those not on Medisafe showing no statistically significant increase over the same time frame. (Control patients’ “start dates” were matched based on the test patient’s delta between their drug initiation and Medisafe start.)

Cohort	Age (Mean)	Female / Male (%)	Pre-Index MPR (Mean)	Delta – Drug & Index Start (Mean)
Medisafe Biologic Program Test Patients (n = 224)	47	66% / 34%	88.0	77.8
Biologic Program Control Patients (n = 672)	47	66% / 34%	88.6	76.3
<i>P-Values¹:</i>				
	0.89		0.81	0.91

¹ Null hypothesis for t-test conducted is mean of the 2 groups is the same. P-value > 0.05 signifies statistical significance.

→ **Persistence:** Results also found that Medisafe program users stayed persistent an extra 5 weeks on their medication therapy compared to non-Medisafe users. These results analyzed patients across 52 weeks, with non-Medisafe users dropping off medication use at 33 weeks.



This study demonstrates Medisafe's human-centered design approach and its ability to influence patient engagement, helping to support increased adherence and extended persistence. Ultimately, the analysis from Komodo's Healthcare Map supports evidence of the impact of a digital drug companion to deliver ongoing support for patients.

About Medisafe:

Medisafe is the leading evidence-based digital therapeutics company providing medication management solutions across the healthcare continuum, a \$300 billion problem in the US alone. Medisafe supports patients' journeys with AI driven technology that dynamically engages patients during the course of their treatment based on each patient's regimen, condition and specific circumstance. Medisafe fosters collaboration among patients, their loved ones and healthcare professionals, and partners with the healthcare ecosystem, from pharma companies to payers and providers, to improve outcomes. Seven million patient and caregiver users are registered on Medisafe's platform with over 4 billion successful medication doses on their iOS and Android smartphones and tablets and have contributed 350,000 user reviews that average 4.7 out of 5 stars in the App Store and Google Play stores. Medisafe is a HIPAA and GDPR compliant solution and ISO 27001:2013 certified. For more information, please visit www.medisafe.com.